

Mission Statement

The mission of the OUHSC Interprofessional Educators and Practitioners Association (“IEPA” or “the Association”) is to organize, recognize, and advocate for faculty, staff, and students to pursue interprofessional collaboration in all aspects of healthcare at the University of Oklahoma Health Sciences Center.

Goals of the Association

1. Develop a formal faculty development program to ensure that all faculty have education and training in the four domains of IPEC Competencies.
2. Promote the development of interprofessional education in the classroom, as well as inpatient and outpatient settings.
3. Recognize/reward faculty for interprofessional education, practice and research which prepares our students for collaborative practice upon graduation.
4. “Transforming how we work together to improve people’s health.”

Motto

We develop interprofessionally-prepared, “team ready” collaborative health care professionals who deliver patient-centered care.

Benefits of Membership in IEPA

- Opportunities for networking with OU Faculty to develop and or enhance interprofessional practice opportunities, interprofessional educational opportunities and research opportunities to support career development goals in promotion and tenure.
- Special consideration for Wisdom Family Foundation Interprofessional Education Research Seed Grants to support interest in pursuing scholarly activities.
- Eligibility for Provost’s Award for Interprofessional Leadership
- Increased knowledge and access to various healthcare resources to enhance outcomes of patient care.

Criteria for Membership

Active Membership:

Faculty Membership

- OU Faculty member in good standing in OU Healthcare Profession and Related Disciplines
- OU Faculty member who supports the development and implementation of OU Interprofessional Curriculum which currently includes:
 - All Professions Days
 - EPIC Clinic
 - Case Management/ Population Health Program
 - Leadership, Education, Neurodevelopment and Related Disabilities (LEND) Program
 - OU Faculty member collaborates with other OU Faculty to propose, develop and implement interprofessional clinical, educational and research activities for our stakeholders.

Advisory/Consultant Membership:

Student/Alumni Affiliate

- OU student or graduate in good academic standing
- Participation in student leadership activities such as, but not limited to, OUHSC Student Government Association, or previous participation in interprofessional initiatives
- Membership may be in an advisory/consultant capacity

Staff Affiliate

- OU Staff member who supports interprofessional curricular or co-curricular programming on campus
- Examples of targeted staff members includes, but is not limited to, student services personnel or those involved in inclusion/diversity and mentoring programming
- Membership may be in advisory/consultant capacity

Community Partner

- Possible development in this area may include clinical site representatives
- Community organizations which provide support for social services to communities
- Membership may be in an advisory/consultant capacity

Levels of Membership

OU Interprofessional Associate

Faculty who apply for Interprofessional Associate membership have an interest and are committed to participate in the Interprofessional Faculty Development Education Program and one organized interprofessional education program in the year of membership.

OU Interprofessional Educator

Faculty who apply for Interprofessional Educator have at least 1 year of experience in interprofessional practice, education or research and have participated in one organized interprofessional activity (All Professions Day, Case Management/Population Health, EPIC Program, Team Mentoring)

OU Distinguished Interprofessional Educator

Faculty who are nominated by current members for outstanding contributions to interprofessional education, practice and/research. Faculty have demonstrated one or more of the following accomplishments: scholarly work in education, practice or outcome in interprofessional collaboration, awards for achievement in interprofessional collaboration, and leadership in interprofessional education at OU.

Emeritus OU Interprofessional Educator:

Faculty who are no longer active faculty but continue to support various interprofessional activities at OU through speakership, mentoring, and fundraising.

Student/Alumni Affiliate

Students or alumni who apply for Interprofessional Student Affiliate membership have an interest and are committed to participate in the Interprofessional Faculty Development Education Program or attend(ed) organized interprofessional education programming in the year of membership.

Staff Affiliate

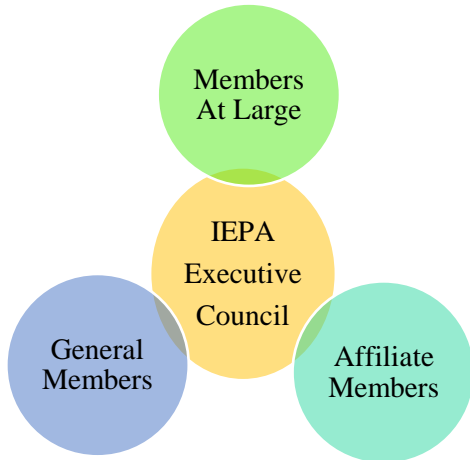
Staff who apply for Interprofessional Staff Affiliate membership have an interest and are committed to participate in the Interprofessional Faculty Development Education Program or attend organized interprofessional education programming in the year of membership.

Community Partner

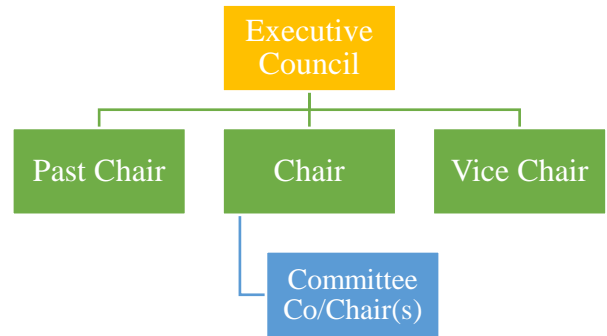
Community members who apply for Interprofessional Community Partner membership have an interest and are committed to participate in the Interprofessional Faculty Development Education Program or attend organized interprofessional education programming in the year of membership.

Organizational Structure and Governance

To develop the priorities and direction and to fulfill the mission, and goals, an IEPA Chair will be selected from the membership of the Association. A Vice Chair and Past Chair will provide continuity to the Chair position. An Executive Council will also provide leadership, support, and continuity of the Association.



IEPA Executive Council Structure



Expectation of Members

- Members are expected to participate in one of the four areas to promote interprofessional education, practice and research at OU.
 - Faculty Development Program
 - Faculty Recognition and Awards, Membership and Alumni
 - Interprofessional Curriculum Development
 - Interprofessional Research and Scholarly Projects
- Members are expected to participate in at least one student IPE team activity annually

Membership Selection

Membership selection is supported by submission of a written Statement of Interest and copy of a current CV or resume to the IEPA Executive Council.