

All Professions Day 1 Fall 2019 September 6, 2019



OUHSC Nicholson Tower
5th Floor Conference Center
1000 NE 13th Street, Oklahoma City 73104
(NE13th Street & Stonewall Avenue)

Use entrance through the
Parking Garage
on Stonewall Avenue
(see next page).

13th Street entrances
are now closed.



Click
for
larger
copy



OKC Campus Students:

Park in previously [assigned student parking](#).
DO NOT park at Nicholson Tower or the Stonewall Garage
unless previously assigned by [OUHSC Parking Office](#).

Tulsa and Norman Students Only:

Park in the [Stonewall Parking Garage \(P4\)](#) at
1240 N. Stonewall Avenue, OKC 73104
Bring white gate ticket to meeting for parking validation.



PLEASE NOTE:
Nicholson Tower
is undergoing
exterior remodeling

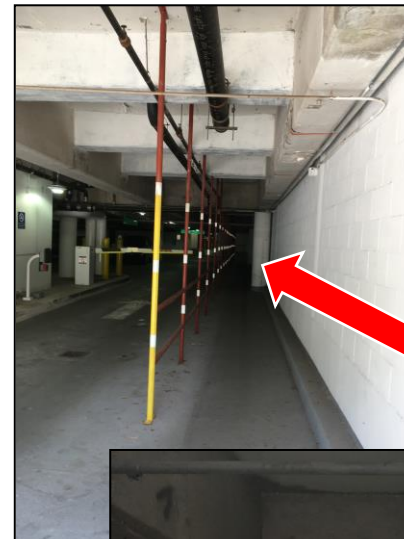
View looking south on Stonewall Avenue



If entering on Stonewall Ave:
Use the construction entrance
through the garage
(unmarked at this time)



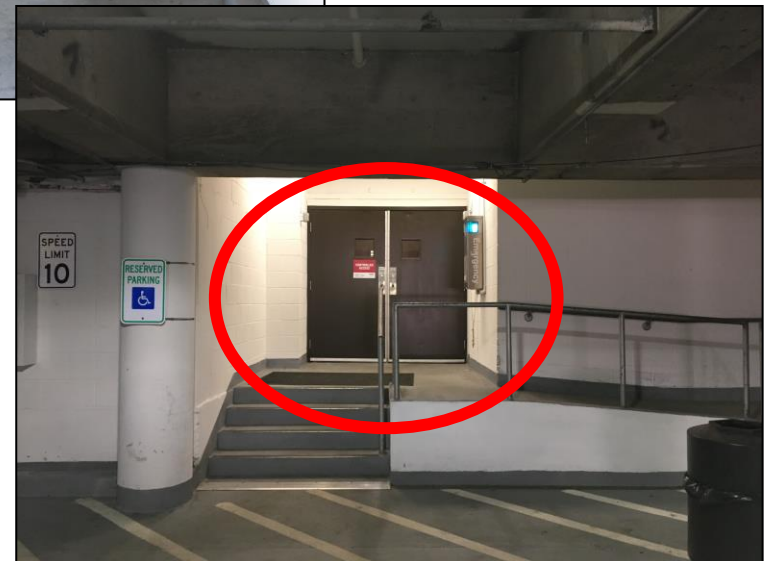
PLEASE NOTE:
Nicholson Tower
is undergoing
exterior remodeling



Use construction walkway
through garage and enter
through double doors.
Follow path to Elevators.
Go to 5th Floor.



Stonewall Avenue
entrance is unmarked
due to construction.



Ouhsc Campus offers free shuttle service:
<https://ouhsc.edu/parking/transport2.htm>