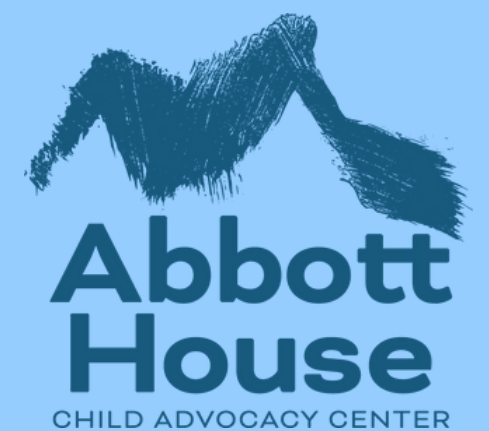


Enhancing Community Response to Child Abuse & Neglect

PRESENTATION BY
CHRISTI CORNETT & RONNI RONEY





CHRISTI CORNETT

**PROGRAM DIRECTOR
MDT COORDINATOR
FORENSIC INTERVIEWER**



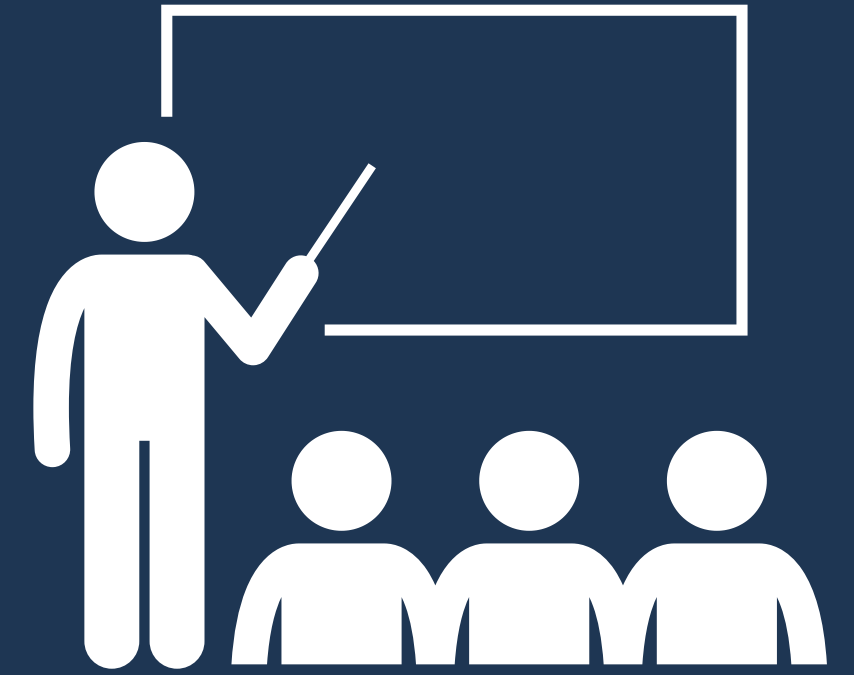
RONNI RONEY

**EDUCATION DIRECTOR
CACO ADVOCACY PEER GROUP
FACILITATOR**

TODAY'S DISCUSSION

Child abuse investigation process

How to leverage training & prevention
education in your community



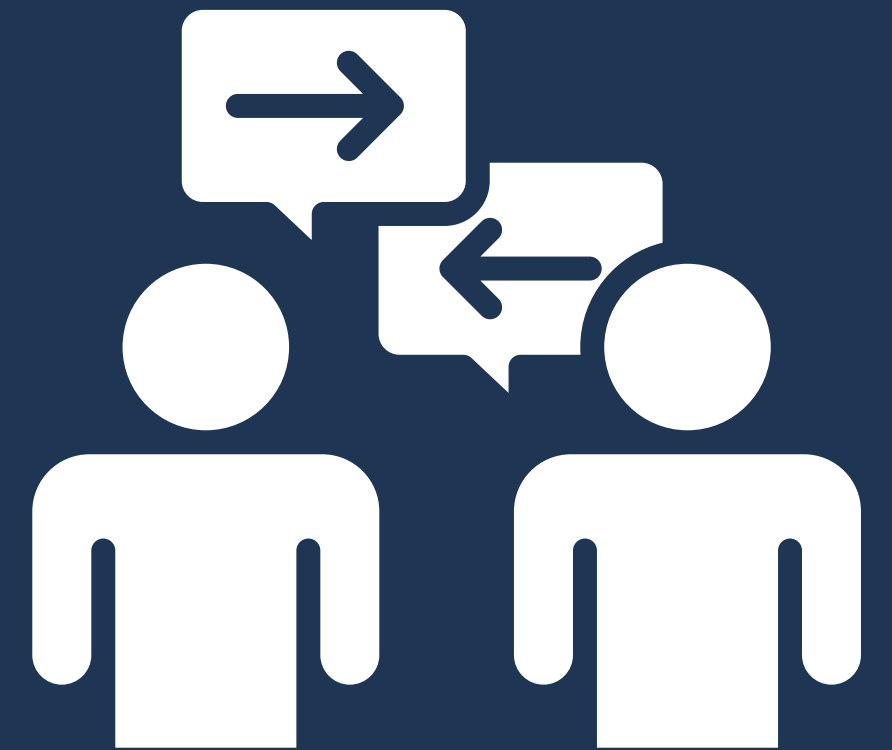
TOPICS TO COVER

Helpful techniques used to foster successful working relationships

How to create community buy in

Creative prevention education practices

STAY
CURIOUS!



HISTORY OF CHILD ADVOCACY CENTERS



•Child Welfare will assign their cases to CPS workers to go out and assess safety.

•LE will assign a detective to investigate the criminal activity being reported.

Once investigators determine CAC Services are needed, they will reach out to schedule forensic interviews and/or other services provided by the CAC.

PROCESS OF INVESTIGATION



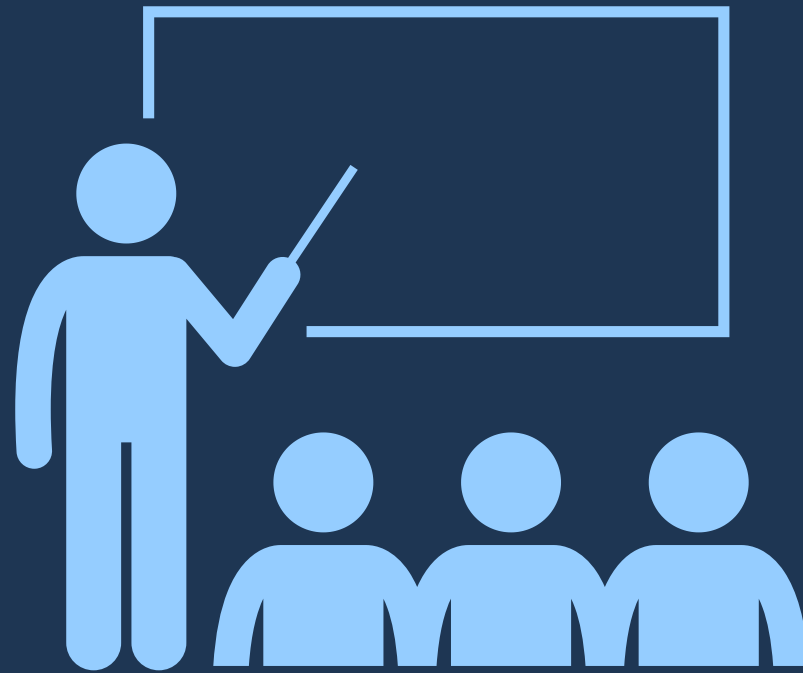
Forensic Interviewing



Family Advocacy



Medical Program



Education & Outreach



***All services provided by Abbott House are free of charge.**

LAW ENFORCEMENT

- **Has a crime been committed?**
- **Does the suspect have access to the child or is there a potential for evidence to be destroyed?**
- **Corroboration**
- **Interviewing family members, possible witnesses**
- **Interviewing suspect**
- **Collaborating with CPS**



CHILD WELFARE

- **Does the alleged suspect have access to the child or other children?**
- **Are the caregivers willing and able to protect the child?**
- **Assess protective capacities of caregivers**
- **Assess safety and well-being of all children in the home**



Process of investigation after CAC



MULTIDISCIPLINARY TEAM APPROACH

- **Reduced trauma for child victims and their families**
- **Greater access to services and resources for child victims and their families**
- **Increased communication and continuity among team members**
- **Shared information and shared expertise for better, more timely response and treatment.**
 - **Case Review**
 - **Service Review**



HELPFUL TECHNIQUES



**ENSURE EVERYONE HAS A
VOICE & EVERYONE IS
INTENTIONAL LISTENERS**

STOP collaborate & listen

MDT REVIEWS

Twice a year have each discipline
explain their role



HELPFUL TECHNIQUES

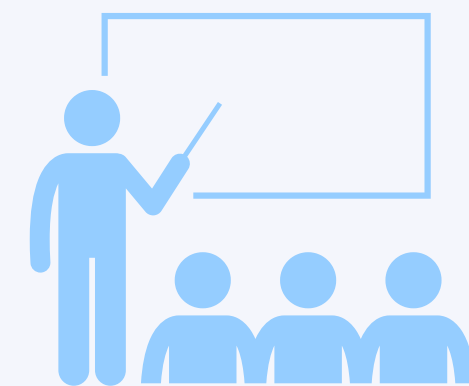


MDT MEETINGS

Facilitation, expectations, boundaries

FACILITATE TRAININGS

Multiple times per year, requested topics,
cases w/hiccups





FIELD GUIDE FOR SERVICES

405-579-5800

After hours: 405-550-0489

231 E Symmes, Norman OK 73069

FORENSIC INTERVIEWS

A forensic interview is needed when any of the below allegations are, or are thought to be, criminal in nature.

Allegations of:

- Sexual Abuse
- Physical Abuse
- Neglect
- Witness to Violence
- Drug Endangerment

Field Interview Questions:

- **Who** is involved? (victim and alleged offender)
- **What** happened?
- **Where** did the abuse occur?
- Is the child or other children in immediate danger? Always ensure safety of the child(ren).
- Is there an immediate need for medical attention? (For the child's wellbeing OR for evidence collection.)

Do not interview the child in detail about the allegations.

EMERGENCY CRITERIA

- When a safe caregiver cannot be identified.
- Alleged offender has access to other children.
- Alleged victims are witness to a homicide.
- Other Factors:
 - The age and development of the child.
 - The child's medical or mental stability.
 - Relationship of alleged offender to the child.

If you have a case that does not fit the criteria, but there is still an emergent need for a forensic interview, please call and speak to an interviewer to staff your case.

MEDICAL SERVICES

- Acute & non acute exams for sexual abuse.
- Exams for physical abuse, neglect, drug endangerment.
- All children may receive an exam, regardless of forensic interview.
- Medical exams are NOT traumatic. Based on principle of Do No Harm.

Sexual Abuse Timeframes

96 HOURS: Bites/Saliva on Skin
72 HOURS: Penile-Vaginal, Penile-Anal, Ejaculation onto a body surface
24 HOURS: Oral - Genital
Within 24 HOURS: Touch DNA

These timeframes are generally applied to pre-pubertal children & can be adjusted based on circumstances or for pubertal children.

Please do not hesitate to call the Abbott House Medical Team for questions or consultations 405-579-5800.

HELPFUL TECHNIQUES

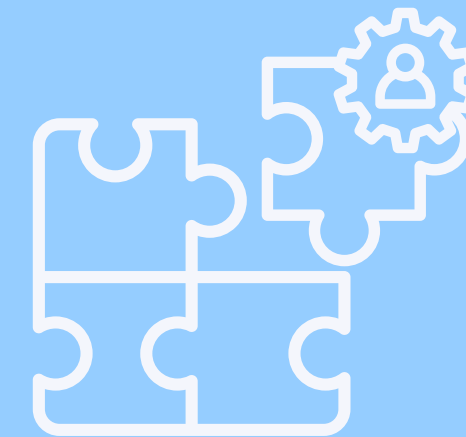



CELEBRATE

Kudos jar, successes, social worker week, LE week, mental health week, etc.


FIND THE GAP & FILL IT

Who's missing from your table?, Vicarious Trauma policies & processes, Resource Fair





NEVER HAVE I EVER (VICARIOUS TRAUMA EDITION)



- You find yourself hoping to get the flu, just so you have a reason to stay in bed for a day
- You find yourself thinking more about your cases than about your upcoming weekend plans.
- You've wondered (more than once) if your cell phone would float when hurled into a river.
- You start using a pencil instead of a pen in your social calendar.
- Medical journals or case files have become "light bedtime reading".
- Your best friends think you've moved away because they haven't heard from you in so long.
- You consider Red Bull/Coffee a part of a balanced diet.
- You feel envious of the barista in Starbucks and day dream about making lattes for a living.
- You're too tired to remember the name of your dog
- It takes you 6 days of vacation to even begin to feel relaxed, and 6 minutes back in the office to make you forget that you took a vacation at all.

The most important aspect of vicarious trauma prevention is that we recognize our warning signs.

SHARE TIME




Ronni Roney + 36 • 8d

Helpful Techniques

Welcome to our Bulletin board! Contribute by posting ideas you have used in the past to help foster successful working relationships

- Assume the Best!
- Be curious!
- Bre
- Chandra
- Listen
- Happy hour
- Therapy
- Do what you say you are going to do
- Linda
- I have used vulnerability and perspective taking to foster healthy and interdependent work relationships.
- Be open to all perspectives
- Listening
- Take staff temperature!
- Saying Good morning
- Candy
- Small praises
- go on a mini vacation with staff.
- Self care
- Smiles
- Random thank yous
- Optimism
- Mindful walks with team
- Positive outlook





COMMUNITY BUY IN

Our Community

MDT, child abuse & trauma focused agencies,
community partners

Community as a whole

town, county, district, area

Our Community

MDT, child abuse & trauma focused agencies,
community partners

Community Outreach

Lunch & Learn

Focus on creating partnerships & how we
can all help each other!



Community as a whole

town, county, district, area



Festivals

PTA Events

Churches

Sporting Events



HOW TO RESPOND TO & REPORT CHILD ABUSE

Statewide 24/7 Child Abuse Hotline
1-800-522-3511

Who is a mandated reporter?

Every person having reason to believe that a child under the age of 18 years is a victim of abuse or neglect shall report the matter immediately to the Department of Human Services (DHS). Reports shall be made to the hotline provided. Any allegation of abuse or neglect reported in any matter to a county officer must be referred to the hotline by the department.

Failure to report child abuse is a misdemeanor offense. Individuals reporting in "good faith" are immune from criminal and civil liability.

How to respond to disclosures:

Listen

Stay calm and do not express disbelief, judgement, or have an emotional reaction. Explain what will happen next.

Reassure

Use positive statements to let the child know it is not their fault. Ex: "You did the right thing by telling me."

Questions

It is **OK** to ask **WHO, WHAT, WHERE**. It is **NOT OK** to probe, to ask the child to disclose fully, or to repeat their disclosure.

When reporting child abuse:

When do I report?

Immediately and first hand

Who do I report to?

DHS Child Abuse Hotline
1-800-522-3511
Imminent danger or injury:
9-1-1

What information do I give?

- Your contact information
- Child's name, age, address
- Names and contact information for all household members
- Incident details:
 - Why you are reporting
 - Injuries
 - Safety concerns
 - etc.

For more information on Child Abuse and Neglect:
Contact Abbott House Child Advocacy Center
abbott-house.org - 405-579-5800

Who can I report child abuse and neglect to?

1. DHS Hotline: 1-800-522-3511

2. Local Police Dept:

3. Supervisor:

For more information on Child Abuse and Neglect:
Contact Abbott House Child Advocacy Center
abbott-house.org - 405-579-5800

CREATIVE PREVENTION EDUCATION PRACTICES

Keeping Them Safe/Stop, Go, Tell

111 Project/Careportal Groups

PTA Nights

Coffee & Conversations

Exchange Club

Community Policing Efforts



When a Child Discloses:



Listen, Stay Calm & Share Next Steps:

Listen carefully and believe the child

Do not express disbelief, judgement or have an emotional reaction.

Let the child know what will happen next, be honest.



Reassure child with positive statements:

"You did the right thing by telling me."

"I'm sorry that happened to you."

"What happened is not your fault."



Questions to ask when a child discloses:

"You CAN ask questions to determine:

WHO, WHAT, WHEN, & WHERE.

Do not probe for more detail than necessary or ask the child to repeat their disclosure.



SAFETY IN ACTION is an education program developed by Abbott House CAC
(405) 579-5800/231 East Symmes, Norman, OK 73069/ abbott-house.org



MANDATED REPORTING LAW



Oklahoma state law requires **ANY PERSON** who has reason to believe a child is abused, or is in danger of being abused, to immediately report suspicion of abuse to the police or DHS.

- EVERYONE in Oklahoma over the age of 18 is a mandated reporter.
- Reporters are NOT required to have proof, only reasonable suspicion.
- A reporter's identity is kept confidential.
- Suspicions **MUST** be reported to DHS and/or law enforcement. Reporting internally does **NOT** absolve you of responsibility.
- Persons making a report in good faith are protected from liability.
- Failure to report is a criminal offense.

TO REPORT ANY SUSPECTED ABUSE OR NEGLECT IN OKLAHOMA, CALL THE STATEWIDE DHS HOTLINE

1-800-522-3511

OPEN 24 HOURS A DAY, 7 DAYS A WEEK.

IF YOU BELIEVE A CHILD IS IN IMMINENT DANGER - CALL THE POLICE IMMEDIATELY BY DIALING 9-1-1



KEY TAKEAWAYS



TRY NEW THINGS!

It's important to not stay stagnant, each new implementation is a step forward in the right direction.



TAKE A PULSE OF YOUR TEAM

Collaborate with other team members.



GET TOGETHER OFTEN

This builds trust & community. Teams can only work well when trust has been established.



Thank you!



Christi Cornett - ccornett@abbott-house.org

Ronni Roney - rroney@abbott-house.org

Do what you
love and
success will
follow.

Passion is the
fuel behind a
successful
career.

Meg Whitman

